



HAVILLANDS

Portfolio



homes as individual as you...



Havillands is a unique and prestigious development, which offers an idyllic location on the fringe of the North Downs in the beautiful and highly sought after village of Wye.

Havillands has been designed by local award winning architects, Clague, who were chosen for their reputation and flair for exceptional designs. It is our aspiration that Havillands represents a highly desirable place to live, with every property within it being arranged to provide the best possible living accommodation. The development has evolved from three years' of consultation with the local community, ensuring every element has been carefully considered.





living in the heart of the countryside

Location

Wye is an idyllic retreat nestling within the Kent Downs Area of Outstanding Natural Beauty. It is surrounded by miles of beautiful countryside and is a perfect centre for enjoying country pursuits, with numerous footpaths and bridlepaths leading directly to the Downs. The country lanes also offer wonderful cycle rides to the nearby villages.

Whilst being a beautifully preserved rural haven Wye has a host of amenities within walking distance of Havillands, including a primary school, Spring Grove Preparatory School, three pleasant public houses, medical and dental surgeries, NatWest and Lloyds TSB banks, a post office, a Co-op supermarket, several restaurants, a wine bar/coffee shop, a library and a butchers.

The village is also ideally situated for communication links, being located 13 miles by road from the city of Canterbury and just 4 miles from the town of Ashford with the international train station and junction 9 and 10 of the M20. These give convenient access to the M25, Eurotunnel and the ports of Dover and Folkestone which provide regular connections to the continent.

The train station at Wye is a 5 minute stroll from Havillands, providing a direct link to Ashford International in seven minutes and London Bridge in less than 75 minutes.* On completion of the high speed rail link this will be reduced to 35 minutes, making it an ideal choice for those needing to commute to London.



* Information obtained from South-Eastern Railway.

the Portfolio collection of distinctive homes at Havillands ~ Wye

Lloyd Bore landscape architects have designed an exceptional landscaping scheme for the 3 acre meadow area on the north side of the development.

Our vision is to create a wonderful natural habitat area that can be enjoyed by the residents as an extension to their garden whilst providing a valuable ecological benefit.





Individual homes of character

The Portfolio collection offers a mix of traditional and contemporary-styled properties, from 2 and 3 bedroom cottages to 4 and 5 bedroom family homes.

Each property has been individually designed to create a feeling of space and light.

Several of the properties feature floor to ceiling windows to maximise the wonderful views over the countryside.

- **Puntowes**
2 bedroom home
Plots: 5, 50
- **Drylands House**
2 bedroom home
Plot: 53
- **Deykin Cottage**
3 bedroom home
Plots: 27, 30
- **Jarman Cottages**
3 bedroom home
Plots: 3, 4
- **Morrell Mews**
3 bedroom home
Plots: 38, 39, 40
- **Eustace Mews**
3 bedroom home
Plots: 43, 44, 45
- **Stevens Cottages**
3 bedroom home
Plots: 17, 18
- **Rose Cottages**
3 bedroom home
Plots: 1, 2, 56, 57
- **Bruneford House**
4 bedroom home
Plots: 54, 55
- **Martin House**
4 bedroom home
Plots: 21, 23
- **Cole House**
4 bedroom home
Plot: 19
- **Bryson House**
4 bedroom home
Plot: 46
- **Parsons House**
4 bedroom home
Plot: 33
- **Wheler House**
4 bedroom home
Plot: 22
- **Carkeridge House**
4 bedroom home
Plot: 36
- **Brett House**
4 bedroom home
Plots: 28, 29
- **Berle House**
4 bedroom home
Plots: 24, 25
- **Harling House**
5 bedroom home
Plot: 26
- **Toke House**
5 bedroom home
Plots: 16, 31, 32, 35, 37, 41, 42

Puntowes

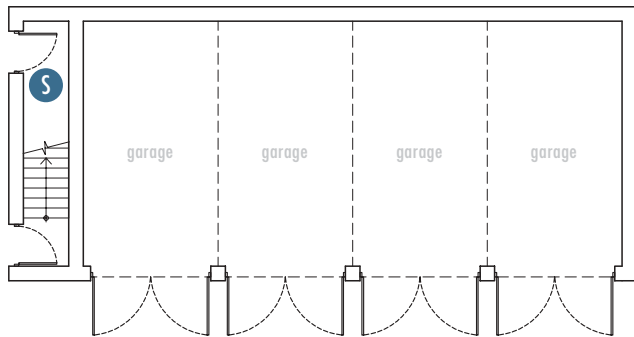
‘Named after three cottages in Bridge Street that were donated as almshouses.’



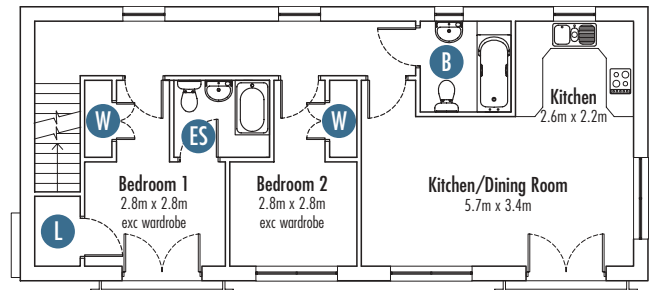
Puntowes

2 bedroom detached home

Plots: 5, 50



ground floor



first floor

S Storage L Linen B Bathroom ES En-suite W Wardrobe

The colour and style of materials used may differ from those shown in the illustration. Elevations are for indicative purposes only and could be subject to change.

‘In 1606 Richard Dryland generously gave the poor of Wye
2 acres in Kingswood to be used to supply them with firewood.’

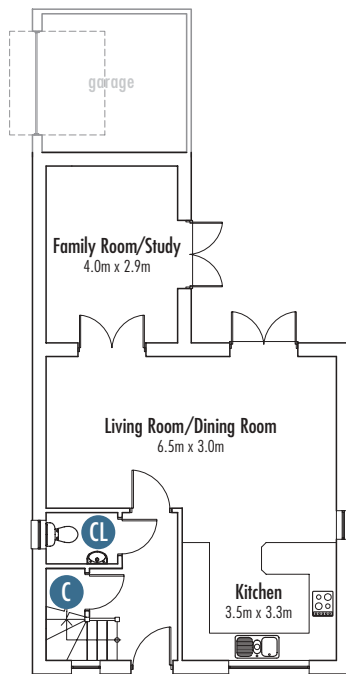
Dryland's House



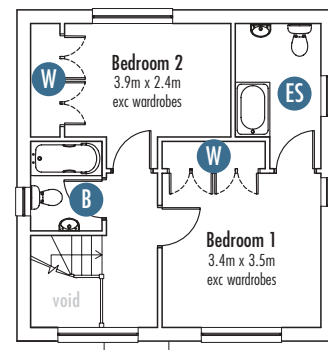
Dryland's House

2 bedroom detached home

Plot: 53



ground floor



first floor

CL Cloakroom C Cupboard B Bathroom ES En-suite W Wardrobe

The colour and style of materials used may differ from those shown in the illustration.
Elevations are for indicative purposes only and could be subject to change.

Deykin Cottage

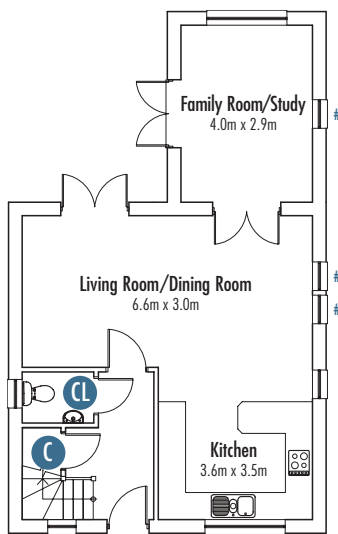
‘ Thomas Deykin was the parish priest of Wye from 1526 to 1534. ’



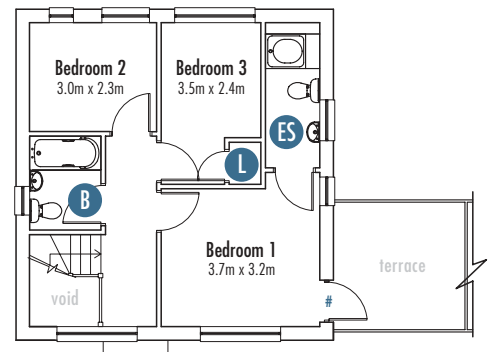
Deykin Cottage

3 bedroom detached home

Plots: 27, 30



ground floor



first floor

CL Cloakroom C Cupboard L Linen B Bathroom ES En-suite

* Windows, door and terrace to plot 27 only, where marked. The family room to plot 30 is on the left. The colour and style of materials used may differ from those shown in the illustration. Elevations are for indicative purposes only and could be subject to change.

‘In 1479 William Jarman bequeathed land called Cherry Orchard to the parish, the rent from the land was to be used to help maintain the church.’

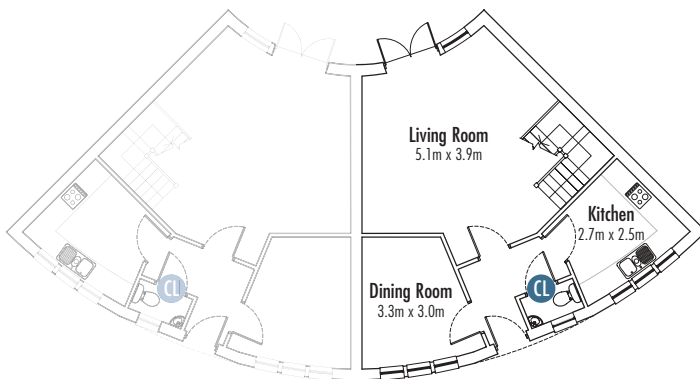
Jarman Cottages



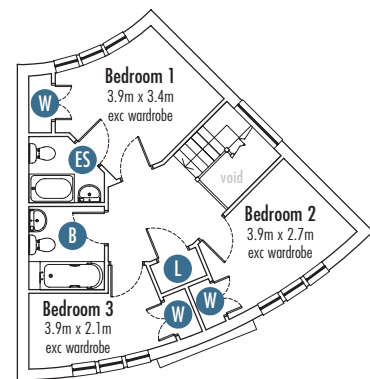
Jarman Cottages

3 bedroom semi detached home

Plots: 3, 4



ground floor



first floor

CL Cloakroom L Linen B Bathroom ES En-suite W Wardrobe

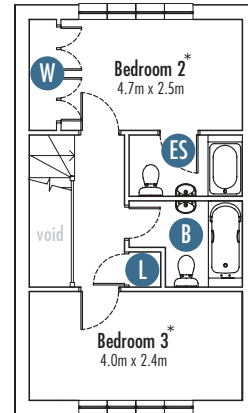
Plot 3 is handed to the floor plans shown (first floor). The colour and style of materials used may differ from those shown in the illustration. Elevations are for indicative purposes only and could be subject to change.



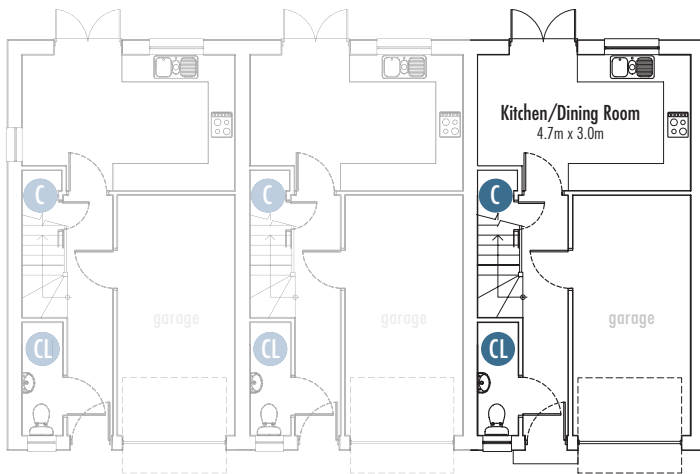
Morrell Mews

3 bedroom home

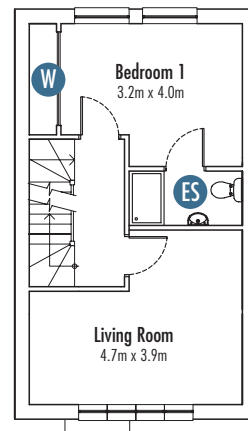
Plots: 38, 39, 40



second floor



ground floor



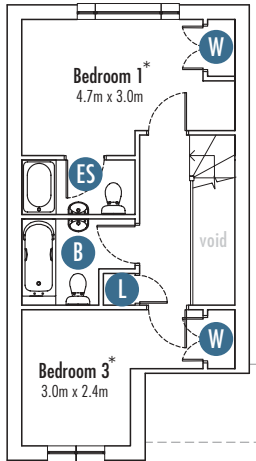
first floor

CL Cloakroom C Cupboard L Linen B Bathroom ES En-suite W Wardrobe

* Second floor rooms may have restricted headroom in some areas.
 Plot 40 floor plans shown (first and second floors). Plot 38 has a side window. The colour and style of materials used may differ from those shown in the illustration.
 Elevations are for indicative purposes only and could be subject to change. Please confirm these details with a Sales Advisor.

‘ St Eustace Well was reputed to have healing properties in medieval times. It is now enclosed in the garden of one of the cottages at Withersdane, Wye College. ’

Eustace Mews



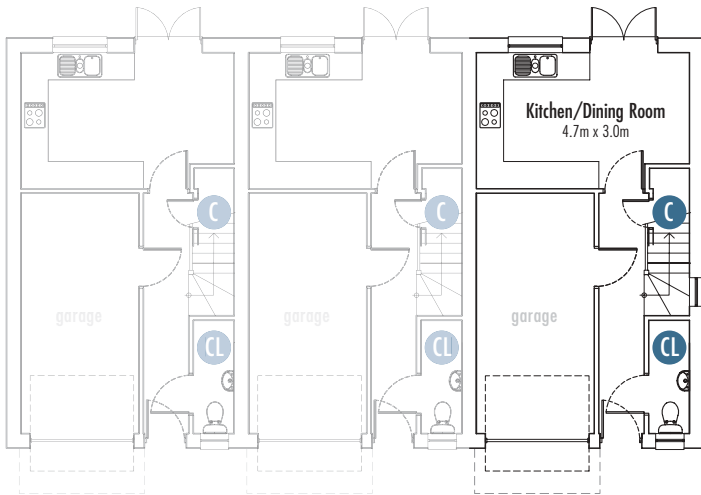
second floor



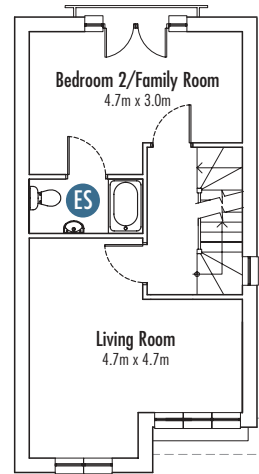
Eustace Mews

3 bedroom home

Plots: 43, 44, 45



ground floor



first floor

CL Cloakroom C Cupboard L Linen B Bathroom ES En-suite W Wardrobe

* Second floor rooms may have restricted headroom in some areas. Plot 45 floor plans shown (first and second floors). Side window to plot 45 only. The colour and style of materials used may differ from those shown in the illustration. Elevations are for indicative purposes only and could be subject to change.

Stevens Cottages

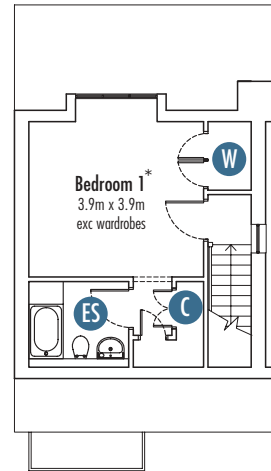
‘Named after Rebecca Stevens who attended Wye College and became the first UK woman to climb Everest.’



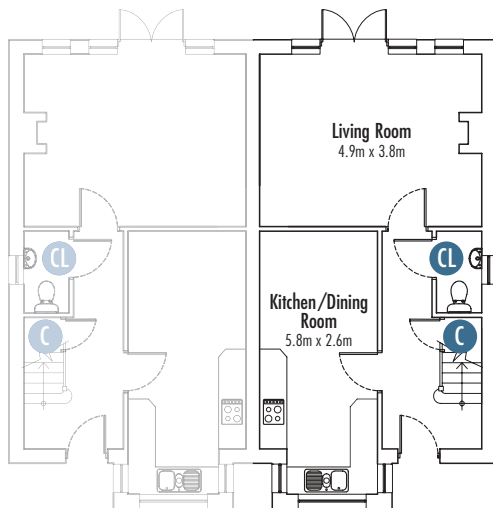
Stevens Cottages

3 bedroom semi detached home

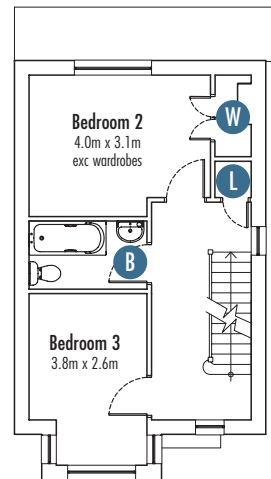
Plots: 17, 18



second floor



ground floor



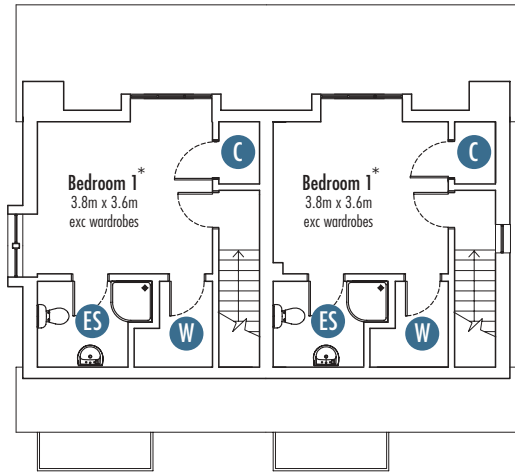
first floor

CL Cloakroom C Cupboard L Linen B Bathroom ES En-suite W Wardrobe

* Second floor rooms may have restricted headroom in some areas.
Plot 17 is handed to the floor plans shown (first and second floors). The colour and style of materials used may differ from those shown in the illustration. Elevations are for indicative purposes only and could be subject to change.

‘In 1505 John Rose donated money to the Parish Church to make a cover for the font and paving for the North aisle.’

Rose Cottages



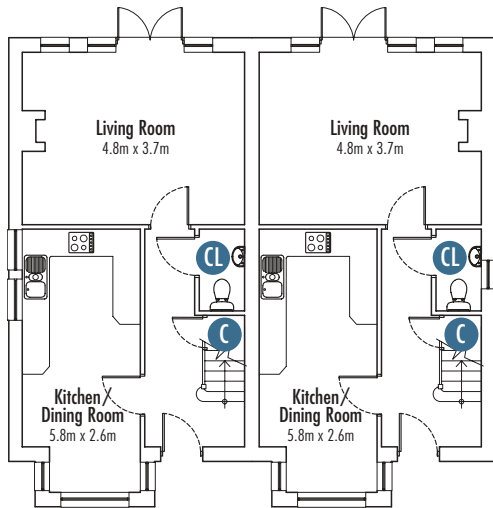
second floor



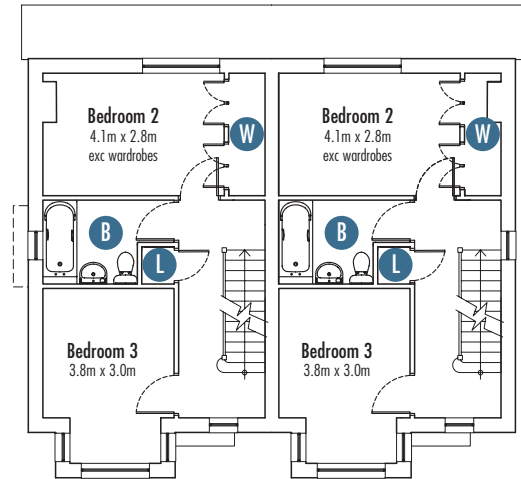
Rose Cottages

3 bedroom semi detached home

Plots: 1, 2, 56, 57



ground floor



first floor

CL Cloakroom C Cupboard L Linen B Bathroom ES En-suite W Wardrobe

* Second floor rooms may have restricted headroom in some areas. Floor plans for plots 1 and 56 are shown left and plots 2 and 57 are shown right. The colour and style of materials used may differ from those shown in the illustration. Elevations are for indicative purposes only and could be subject to change.

Bruneford House

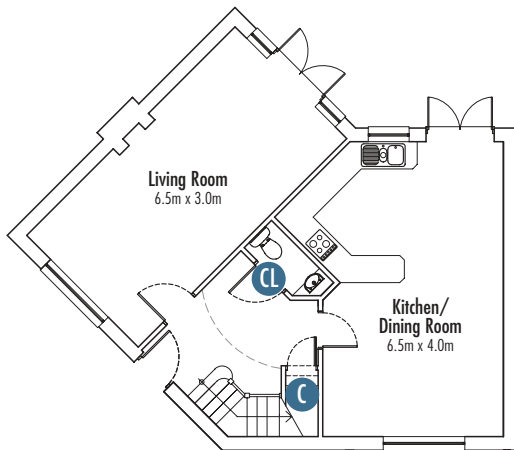
‘William de Bruneford owned Wye Manor from 1271 - 1285.
He became vicar of Wye and took vows of poverty.’



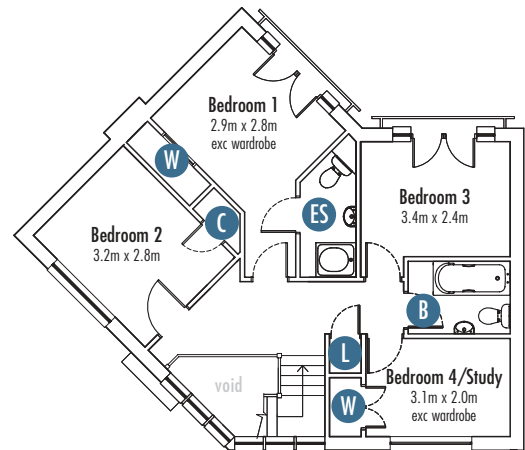
Bruneford House

4 bedroom semi detached home

Plots: 54, 55



ground floor



first floor

CL Cloakroom C Cupboard L Linen B Bathroom ES En-suite W Wardrobe

Plot 55 is handed to the floor plans shown. The colour and style of materials used may differ from those shown in the illustration. Elevations are for indicative purposes only and could be subject to change.

‘Ms Martin was the first appointed district nurse in Wye between 1903 and 1916. Her wages were paid for by village fundraising.’

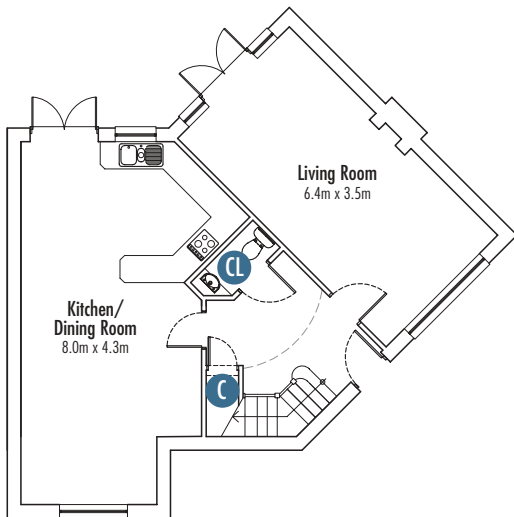
Martin House



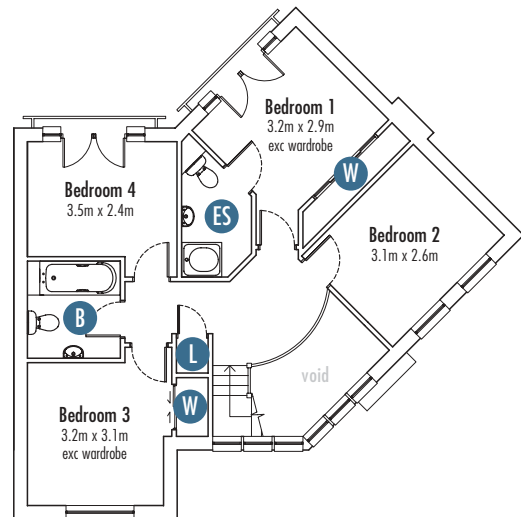
Martin House

4 bedroom home

Plots: 21, 23



ground floor



first floor

CL Cloakroom C Cupboard L Linen B Bathroom ES En-suite W Wardrobe

Plot 23 is handed to the floor plans shown. The colour and style of materials used may differ from those shown in the illustration. Elevations are for indicative purposes only and could be subject to change.

Cole House

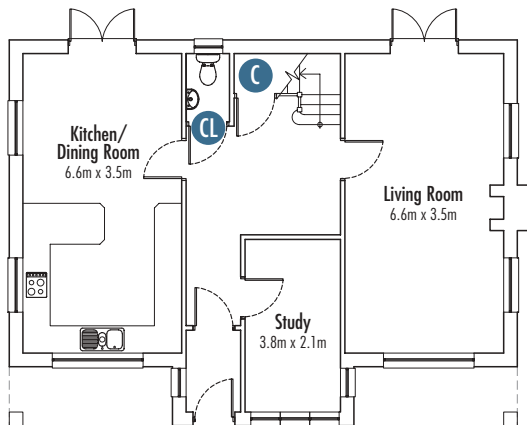
'In 1653 Robert Cole gave by deed a donation to pay for annual sermons and food for the local poor. The money was used to buy land in Brabourne, it was later sold and used to buy almshouses.'



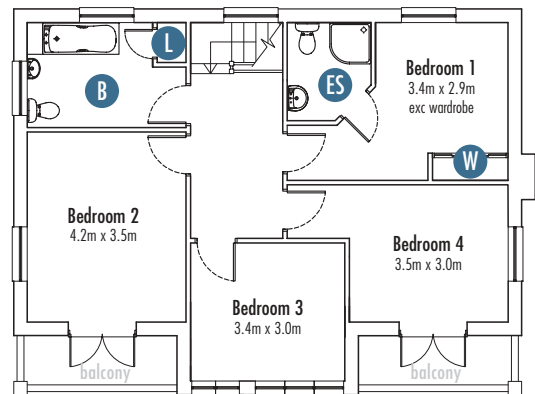
Cole House

4 bedroom detached home

Plot: 19



ground floor



first floor

CL Cloakroom C Cupboard L Linen B Bathroom ES En-suite W Wardrobe

The colour and style of materials used may differ from those shown in the illustration. Elevations are for indicative purposes only and could be subject to change.

‘ Oliver Campbell Bryson was a pilot at Wye aerodrome who was awarded the George Cross for saving his co-pilot when their plane crashed. ’

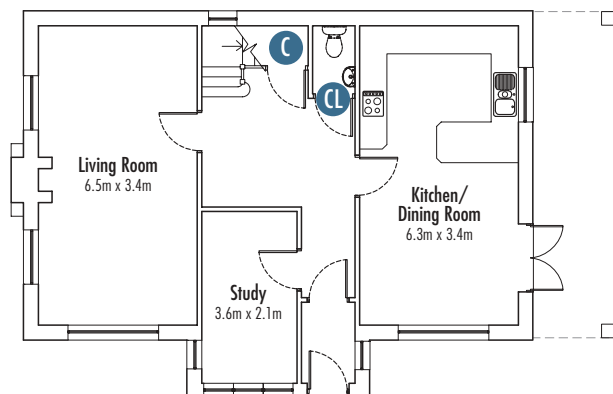
Bryson House



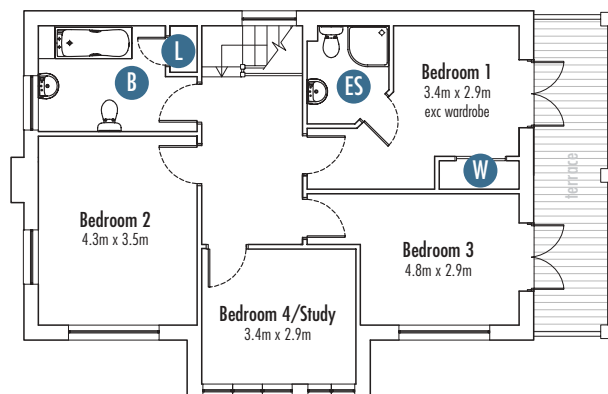
Bryson House

4 bedroom detached home

Plot: 46



ground floor



first floor

CL Cloakroom C Cupboard L Linen B Bathroom ES En-suite W Wardrobe

The colour and style of materials used may differ from those shown in the illustration. Elevations are for indicative purposes only and could be subject to change.

Parsons House

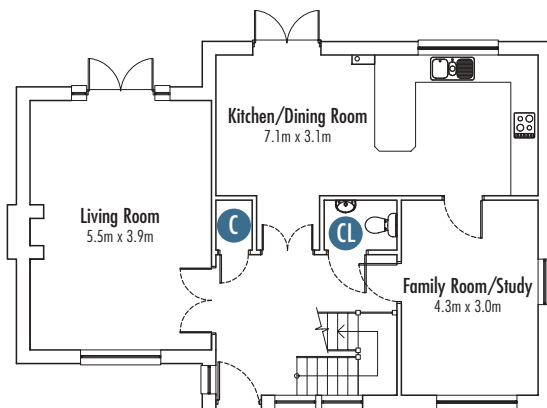
Philip Parsons was a scholar, an archaeologist and served as parish priest and master of the grammar school at Wye College for 51 years until his death in 1812. He was the founder of the oldest Sunday School in Britain established in 1785.



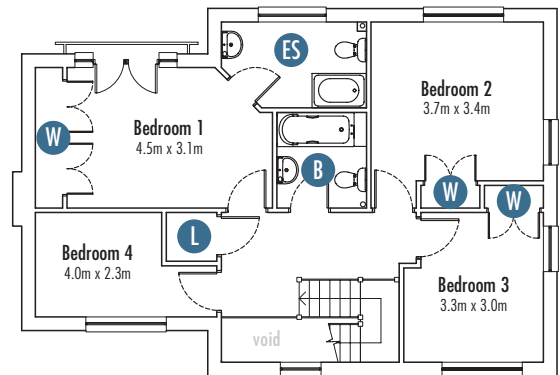
Parsons House

4 bedroom detached home

Plot: 33



ground floor



first floor

CL Cloakroom C Cupboard L Linen B Bathroom ES En-suite W Wardrobe

The colour and style of materials used may differ from those shown in the illustration. Elevations are for indicative purposes only and could be subject to change.

‘ Sir George Wheler (1650-1723) was educated at Wye College and Oxford University. On his death he bequeathed buildings for the joint use of Wye grammar school and an elementary school. He also left funds to send a Wye boy to his Oxford College. ’

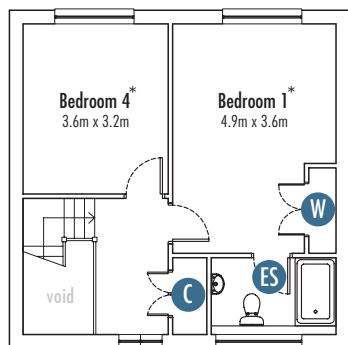
Wheler House



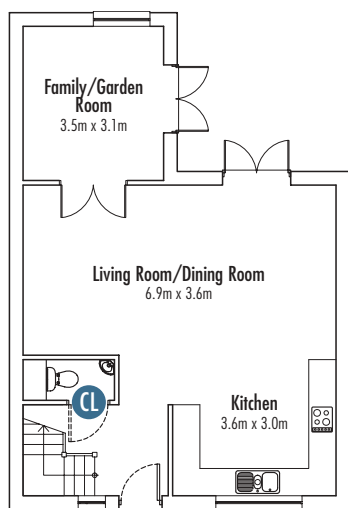
Wheler House

4 bedroom home

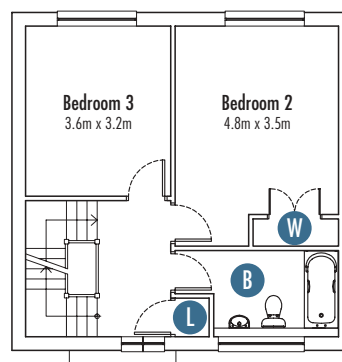
Plot: 22



second floor



ground floor



first floor

CL Cloakroom C Cupboard L Linen B Bathroom ES En-suite W Wardrobe

* Second floor rooms may have restricted headroom in some areas. The colour and style of materials used may differ from those shown in the illustration. Elevations are for indicative purposes only and could be subject to change.

Carkeridge House

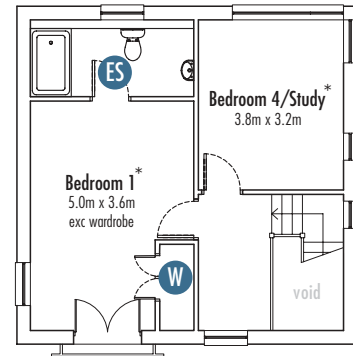
‘In 1640 Thomas Carkeridge gave by will a rent charge on land to provide clothes for four poor families. It was distributed as cloth purchased by church wardens.’



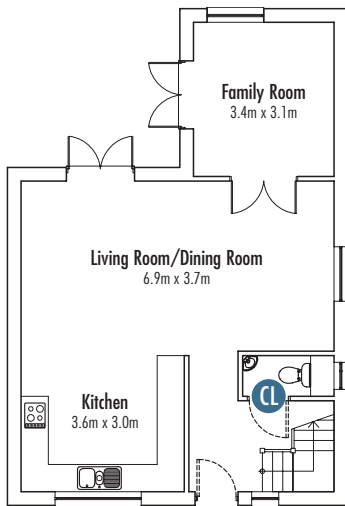
Carkeridge House

4 bedroom detached home

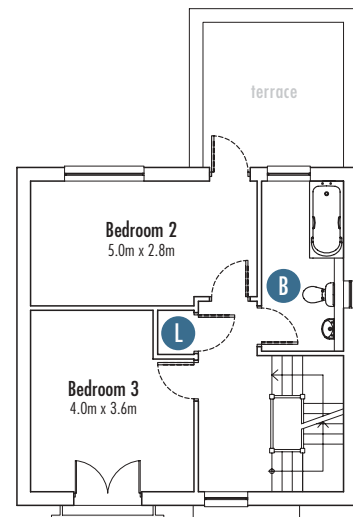
Plot: 36



second floor



ground floor



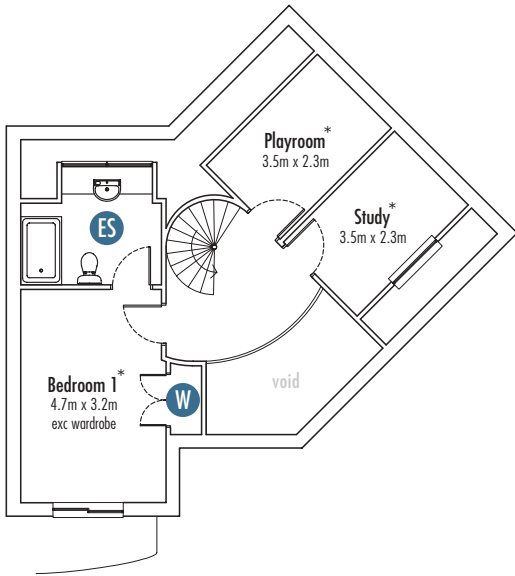
first floor

CL Cloakroom L Linen B Bathroom ES En-suite W Wardrobe

* Second floor rooms may have restricted headroom in some areas.
The colour and style of materials used may differ from those shown in the illustration.
Elevations are for indicative purposes only and could be subject to change.

Reverend Dr Thomas Brett was educated at Wye College and Cambridge. In 1691 he became ordained as a priest and acted as curate in Wye, he donated substantially towards the repair of the collapsed church tower. He lived most of his life at Spring Grove in Wye.

Brett House



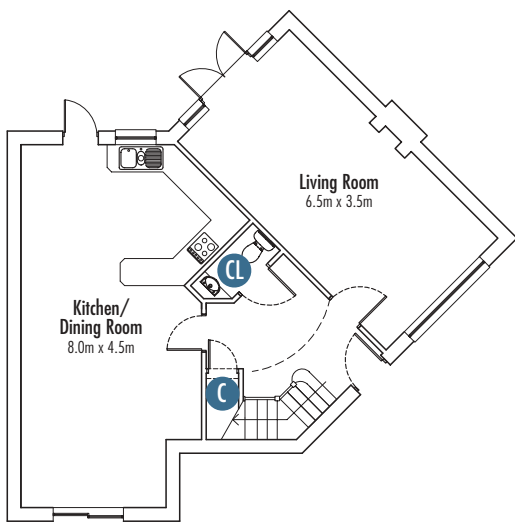
second floor



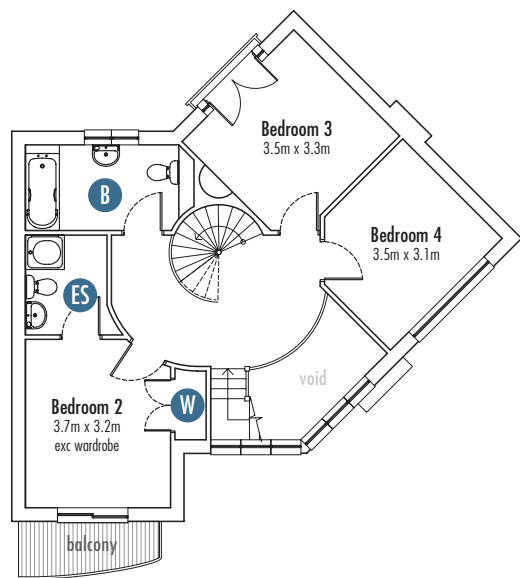
Brett House

4 bedroom semi detached home

Plots: 28, 29



ground floor



first floor

CL Cloakroom C Cupboard B Bathroom ES En-suite W Wardrobe

* Second floor rooms may have restricted headroom in some areas. Plot 29 is handed to the floor plans shown. The colour and style of materials used may differ from those shown in the illustration. Elevations are for indicative purposes only and could be subject to change.

Berle House

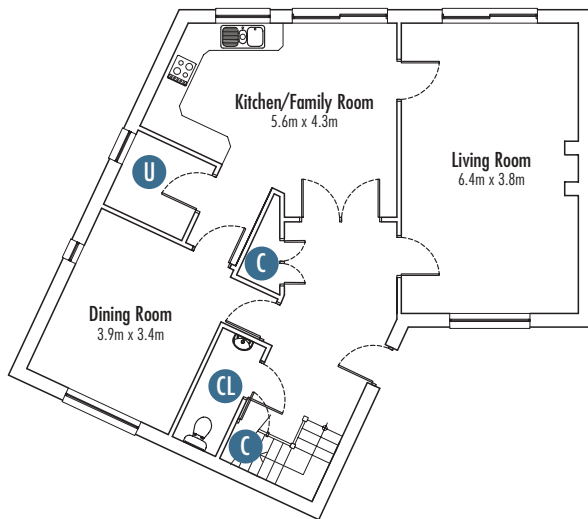
‘In 1518 John Berle donated money towards the restoration of Wye church.’



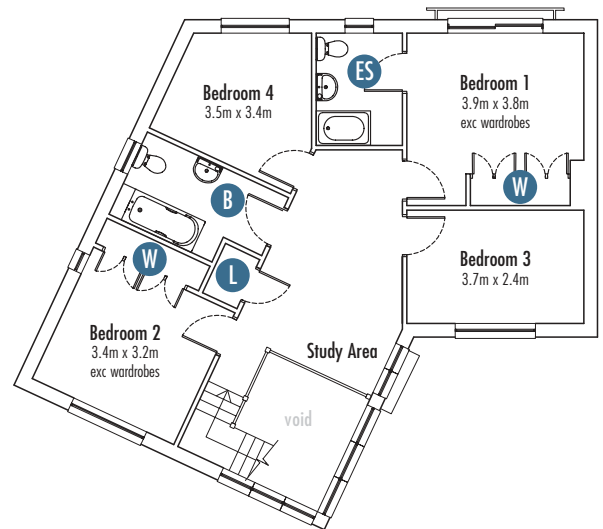
Berle House

4 bedroom home

Plots: 24, 25



ground floor



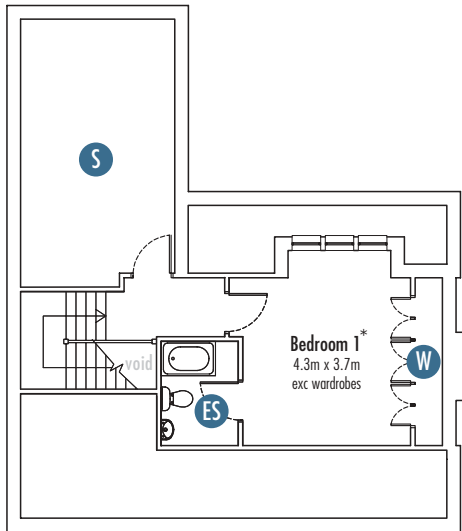
first floor

U Utility CL Cloakroom C Cupboard L Linen B Bathroom ES En-suite W Wardrobe

Plot 24 is handed to the floor plans shown and has two front windows to the living room. The colour and style of materials used may differ from those shown in the illustration. Elevations are for indicative purposes only and could be subject to change.

‘Mr Harling was the village policeman in WW1.
His two daughters Ella and Ethel joined the RFC and
worked at Wye aerodrome.’

Harling House



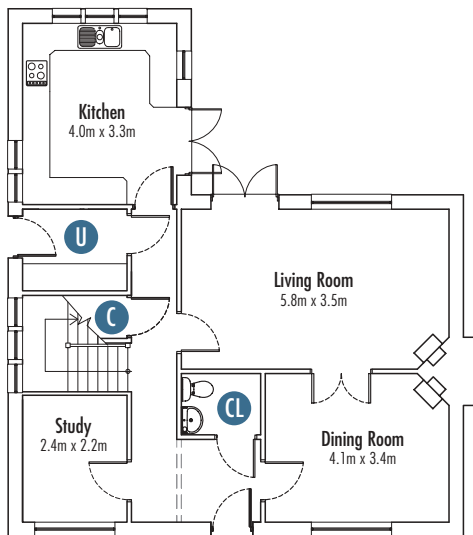
second floor



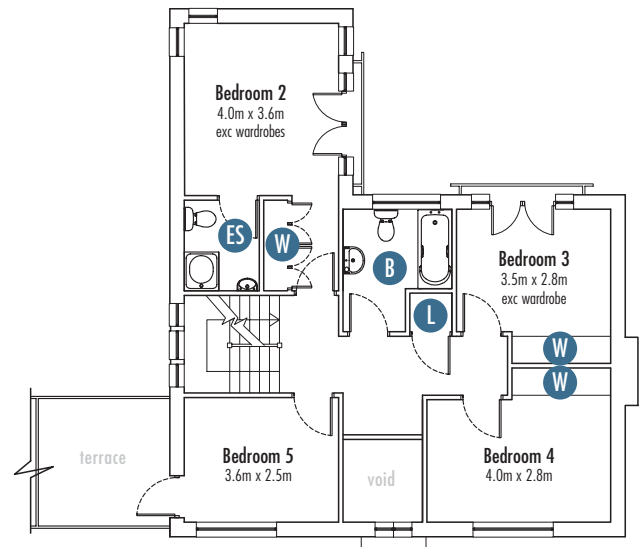
Harling House

5 bedroom detached home

Plot: 26



ground floor



first floor

U Utility CL Cloakroom C Cupboard L Linen B Bathroom ES En-suite W Wardrobe S Storage

* Second floor rooms may have restricted headroom in some areas.
The colour and style of materials used may differ from those shown in the illustration.
Elevations are for indicative purposes only and could be subject to change.

Toke House

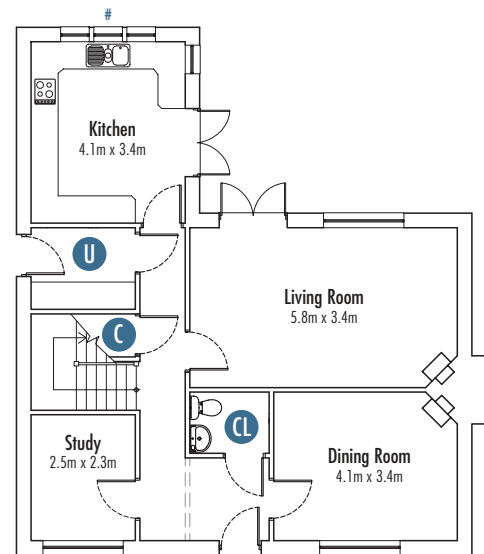
‘John Toke was squire of Godington in the 18th Century. He campaigned for greater compassion in the running of workhouses. In 1770 he anonymously published a pamphlet “Five letters on the state of the poor in the County of Kent.”’



Toke House

5 bedroom detached home

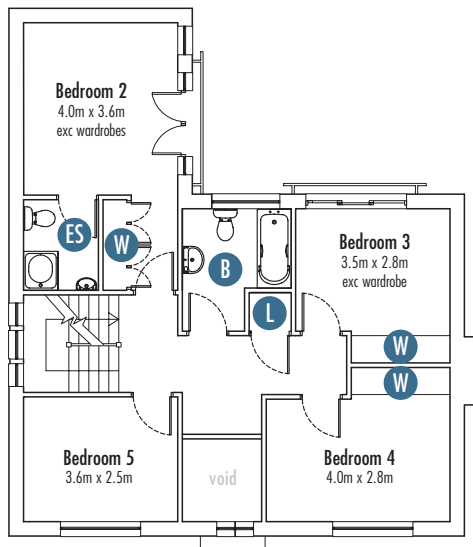
Plots: 16, 31, 32, 35, 37, 41, 42



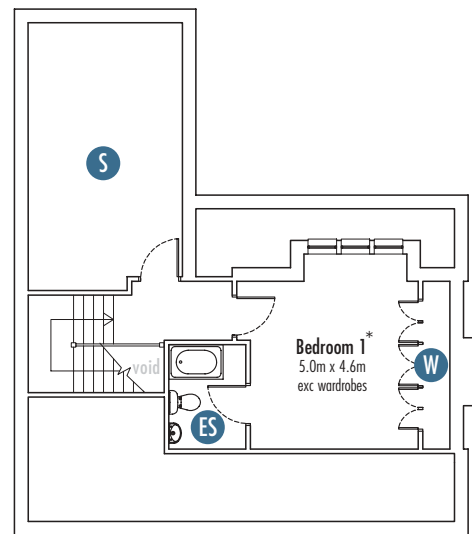
The elevational treatments for these properties varies. Each plot will be finished using a combination of brick, tile hanging or weatherboarding in a selection of colours. Please confirm these details with a Sales Advisor.

ground floor

[#] Plots 16, 31 and 32 have no end window to the kitchen. The colour and style of materials used may differ from those shown in the illustration. Elevations are for indicative purposes only and could be subject to change.



first floor



second floor

U Utility
 CL Cloakroom
 C Cupboard
 L Linen
 B Bathroom
 ES En-suite
 W Wardrobe
 S Storage

*Second floor rooms may have restricted headroom in some areas. The colour and style of materials used may differ from those shown in the illustration. Elevations are for indicative purposes only and could be subject to change.

directions to Havillands

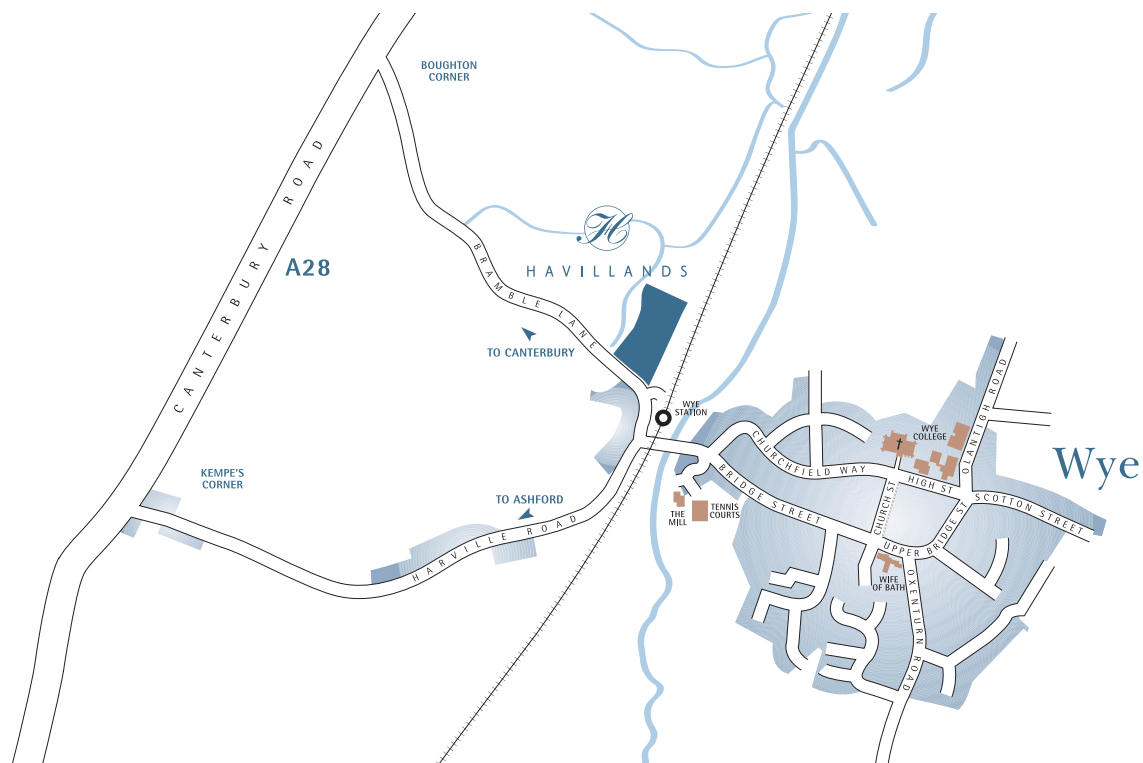
For navigation systems

Havillands postcode is TN25 5EH.

From Ashford/London

From junction 10 of the M20 take the first exit, left at the roundabout signposted to Kennington and Canterbury. You will pass the William Harvey hospital on your right. Continue along this road for 2 miles passing Quest and Premier Food factories on the left.

At the roundabout take the second exit, right towards Canterbury onto the A28. After 1.4 miles you will reach the Boughton Lees/Wye cross roads, continue straight ahead. After a further 0.9 miles (at Boughton Corner), turn right into Bramble Lane, signposted Wye/Brook. Continue for 0.7 miles. Havillands is located on the left.





About FDC Homes

FDC Homes is a family-run house building company. Our origins date back to 1969. During this period we have built over a thousand homes in the Kent region and have established a reputation as builders of exclusive developments. This is highlighted by the fact that we have sold many of our properties to returning customers.

At FDC Homes, we pride ourselves in building properties that are thoughtfully and sensitively designed. As a local company, every effort is made to ensure each development complements its surroundings.

We are aware that buying a home is a significant investment, so a great deal of care is taken in the building of each individual home. All our craftsmen are highly skilled ensuring each property is of the highest quality.

When purchasing an FDC Home you can be sure that you will be getting a beautifully finished home that represents excellent value for money.



FDC
HOMES

Yew Tree Studios, Stone Street,
Stanford North, Ashford, Kent TN25 6DH
info@fdchomes.co.uk fdchomes.co.uk

CLUTTONS

Selling Agent: cluttons.com
01227 457441 01622 756000

The fields adjacent to the site of Havillands were the location of Wye aerodrome in the First World War. The name 'Havillands' has been taken from the De Havilland planes that were used as training planes at the aerodrome.

The Havillands site itself was used by the Ministry of Defence in the Second World War. It is believed that PLUTO (the pipeline under the ocean) ran from the site to the south coast and across the channel to supply fuel to the Allies in France.

Taken from 'Wye in the 2nd World War' by Paul Cobbs.

The information used for the house names has been taken from various sources in Ashford Library, including 'A New History of Wye' P Burnham & M De Saxe 2003; 'Wye Church and Wye College' C S Orwin, S Williams, 'Wye in the 18th Century' Bryan Keith Lucas.

Designed and produced by Lightwave Design www.lightwavedesign.co.uk



FDC
HOMES

info@fdchomes.co.uk
fdchomes.co.uk

cluttons.com
01227 457441
01622 756000

